

WEBCAST ONLY AUCTION OF LARGE QUANTITY OF DEMOLITION, SCRAP PROCESSING AND EARTHMOVING EQUIPMENT TO INCLUDE IMPACT CRUSHERS, SCRAP SHREDDERS, CATERPILLAR DOZERS, WHEEL LOADERS, TELEHANDLERS, EXCAVATORS, SKID STEERS, TAYLOR AND HYSTER FORKLIFTS, MOWERS, MAGNETS, AND SHEAR ATTACHMENTS

BidSpotter.com
See Instructions on Page 3
To Become a Qualified Bidder on the Internet

WEBCAST AUCTION

Surplus Equipment to



KR EQUIPMENT

5700 West 58th Street – Ashtabula, Ohio 44004
60 Miles East of Cleveland, Ohio

SALE DATE: WEDNESDAY, JUNE 10TH AT 10:00 AM

INSPECTION: MONDAY, JUNE 9TH FROM 10:00 AM TO 4:00 PM



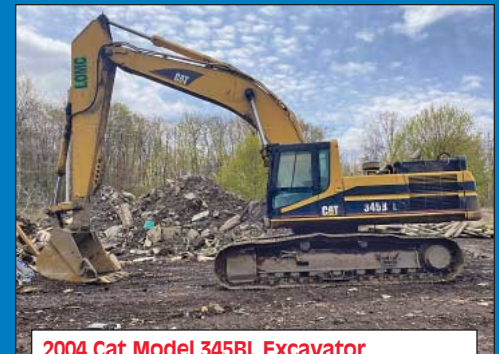
NEW
2008

ITEMS BEING
ADDED DAILY

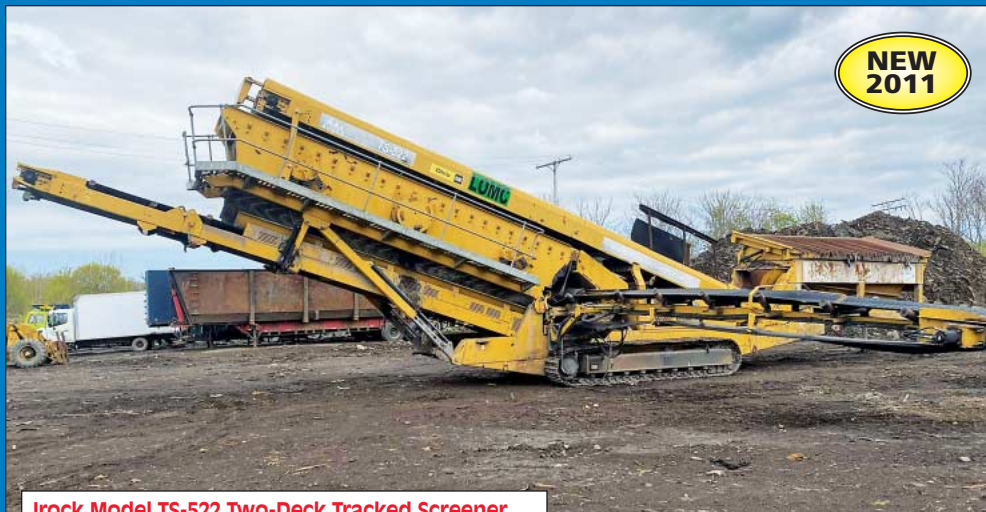
2008 Terex Pegsun 1412 Trakpactor Tracked Rock Crusher



Eagle Model 4860 Grinder Mobile Hammer Mill



2004 Cat Model 345BL Excavator



NEW
2011

Irock Model TS-522 Two-Deck Tracked Screener



2005 Komatsu WA500 Wheel Loader with Bucket



Sale Under The Management Of

CINCINNATI INDUSTRIAL AUCTIONEERS

auctioneers | appraisers | since 1961 | cia-auction.com | info@cia-auction.com

2020 Dunlap St., Cincinnati, Ohio 45214 Phone 513-241-9701 Fax 513-241-6760



WEDNESDAY, JUNE 10TH - 10:00 AM



2008 Link-Belt Model 330LX Excavator



2015 Doosan Model DX180 Excavator



Al Jon Model 400 Scrap Baler



2001 Samsung Model SE240 Excavator



2006 Fuchs Model MHL350 Material Handler w/ Genset & Magnet



2012 Link-Belt Model 370LX Material Handler



2004 Cat D5NXL Dozer



John Deere TC54h with Bucket



Hydro Ax Feller Buncher Tree Shear

ROCK CRUSHER

2008 Terex Pegsun 1412 Trakpactor Tracked Rock Crusher; S/N 1402157FF; 328 KW, 48,040 Lbs Gross Weight

SCREENER

Irock Model TS-522 Two-Deck Tracked Screener; S/N 3D05M522016

HAMMER MILL

Eagle Model 4860 Grinder Mobile Hammer Mill; S/N 10647 (1998)

BALER

Al Jon Model 400 Scrap Baler; S/N 12856 (1995)

MOBILE SHREDDER

2005 SSI Primax 4000 Mobile Tracked Shredder; S/N P0121

MATERIAL HANDLING

2006 Fuchs Model MHL350 Material Handler w/ Genset & Magnet

2012 Link-Belt Model 370LX Material Handler

EXCAVATORS

2008 Link-Belt Model 330LX Excavator; S/N K9J7-2669

2004 Cat Model 345BL Excavator; S/N CAT0345BEAGS02252

2001 Cat Model 350 Excavator; S/N M00202

2001 Samsung Model SE240 Excavator; S/N FGY0443

2015 Doosan Model DX180 Excavator; S/N DKKCE-BANAL001217

Case Model CX135 Excavator; S/N 511920385

2012 Link-Belt Model 135 Spin Ace Excavator; S/N EBAK14759

Komatsu PC10 Mini Excavator with Bucket; S/N 26990

Bobcat 331 Mini Excavator with Bucket; S/N 511920385

Nissan 580 Mini Excavator

(4) Excavator Buckets
Hitachi Model EX120-3 Excavator; s/n 12U42658, 42" Tooth Bucket, 8,652 Hours (2006)

SHEARS

Hydro Ax Feller Buncher Tree Shear; S/N 8383002

Cat MP20 Processor Metal Shear with Concrete Jaw

Excavator Metal Shears

Skid Steer Metal Shear

(2) Excavator Tree Shears

ATTACHMENTS

(2) Excavator Hammers

R80 Excavator Hammer

65 mm 5-Finger Grapple Buckets

Excavator Clean Up Brush Grapple

Excavator Solid Grapple
Cat Rotating Orange Peel Grapple

Chuck and Duck Tree Chipper

(2) 80 mm Pin Size Tilting Excavator Buckets

Gen Set and Magnet Off Samsung

Detroit 12 Cyl. Generator

Detroit 12 Cyl. Generator

Detroit 12 Cyl. Generator

Detroit 12 Cyl. Generator

Detroit 12 Cyl. Generator

Detroit 12 Cyl. Generator

Detroit 12 Cyl. Generator

Detroit 12 Cyl. Generator

Detroit 12 Cyl. Generator

Detroit 12 Cyl. Generator

Detroit 12 Cyl. Generator

Detroit 12 Cyl. Generator

Detroit 12 Cyl. Generator

Detroit 12 Cyl. Generator

Detroit 12 Cyl. Generator

Detroit 12 Cyl. Generator

Detroit 12 Cyl. Generator

Detroit 12 Cyl. Generator

Detroit 12 Cyl. Generator

Detroit 12 Cyl. Generator

Detroit 12 Cyl. Generator

Detroit 12 Cyl. Generator

Detroit 12 Cyl. Generator

Detroit 12 Cyl. Generator

Detroit 12 Cyl. Generator

Detroit 12 Cyl. Generator

Detroit 12 Cyl. Generator

Detroit 12 Cyl. Generator

Detroit 12 Cyl. Generator

Detroit 12 Cyl. Generator

Detroit 12 Cyl. Generator

Detroit 12 Cyl. Generator

Detroit 12 Cyl. Generator

Detroit 12 Cyl. Generator

Detroit 12 Cyl. Generator

Detroit 12 Cyl. Generator

Detroit 12 Cyl. Generator

Detroit 12 Cyl. Generator

Detroit 12 Cyl. Generator

Detroit 12 Cyl. Generator

Detroit 12 Cyl. Generator

Detroit 12 Cyl. Generator

Detroit 12 Cyl. Generator

Detroit 12 Cyl. Generator

DOZERS

2004 Cat D5NXL Dozer; S/N AGG0189

LIFT TRUCKS

2006 Taylor Model T220 Lift Truck with Pipe Grapple; S/N SBB31585

Terramite 3-Wheel Lift Truck

Lift Trucks by Hyster, Linde, Datsun & Clark

MISC. EQUIPMENT

Snorkel SR32 Man Lift

John Deere 2310 Compact Tractor

Tub Grinder

(2) Wacker Neuson Light Tower

(2) Wacker Neuson Light Tower

(2) Wacker Neuson Light Tower

(2) Wacker Neuson Light Tower

(2) Wacker Neuson Light Tower

(2) Wacker Neuson Light Tower

(2) Wacker Neuson Light Tower

(2) Wacker Neuson Light Tower

(2) Wacker Neuson Light Tower

(2) Wacker Neuson Light Tower

(2) Wacker Neuson Light Tower

(2) Wacker Neuson Light Tower

(2) Wacker Neuson Light Tower

(2) Wacker Neuson Light Tower

(2) Wacker Neuson Light Tower

(2) Wacker Neuson Light Tower

(2) Wacker Neuson Light Tower

(2) Wacker Neuson Light Tower

(2) Wacker Neuson Light Tower

(2) Wacker Neuson Light Tower

(2) Wacker Neuson Light Tower

(2) Wacker Neuson Light Tower

(2) Wacker Neuson Light Tower

(2) Wacker Neuson Light Tower

(2) Wacker Neuson Light Tower

(2) Wacker Neuson Light Tower

(2) Wacker Neuson Light Tower

(2) Wacker Neuson Light Tower

(2) Wacker Neuson Light Tower

(2) Wacker Neuson Light Tower

(2) Wacker Neuson Light Tower

(2) Wacker Neuson Light Tower

(2) Wacker Neuson Light Tower

(2) Wacker Neuson Light Tower

(2) Wacker Neuson Light Tower

(2) Wacker Neuson Light Tower

(2) Wacker Neuson Light Tower

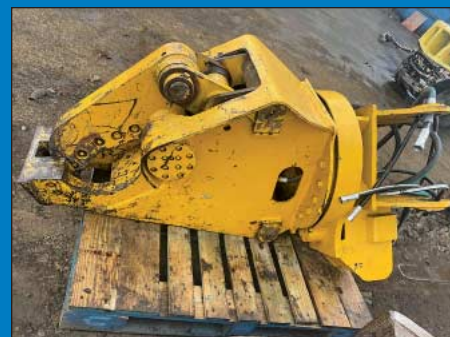
(2) Wacker Neuson Light Tower

(2) Wacker Neuson Light Tower

(2) Wacker Neuson Light Tower



Cat MP20 Processor Metal Shear with Concrete Jaw



Excavator Metal Shears



Asphalt Planner Grinder Skid



2005 SSI Primax 4000 Mobile Tracked Shredder



Manitou Model MT 732 Telehandler



(2) 2006 Taylor Model T220 Lift Trucks

Steer Attachment
Forks Skid Steer Attachment
72" Root Grapple Bucket Skid Steer Attachment
Concrete Bucket Skid Steer Attachment

TELEHANDLERS

Manitou Model MT 732 Telehandler

Gradall 534B Telehandler with Forks; S/N 022440175

DUMP TRUCKS

2012 Ford F550 Steak Body Dump Bed; VIN 1FDUF5GTZCEA72037

1997 Ford L9000 5-Axle Dump Truck; VIN 1FDZU9C23UUA06264

1987 International Yellow Dump Truck; VIN 1HTZUGJTX-HH500273

TRACTORS

2013 International Prostar

Tractor; VIN 3HSDJSJR6DN615132
2013 Peterbilt 389 Tractor; VIN 1XPHDP9XQCD174131
2004 Freightliner Columbia Tractor; VIN 1FUJA6CV34LL96904

2011 International ProStar Day Cab Tractor w/ Wetline

ROLLOFF TRUCK

Peterbilt Roll Off Truck
1994 International 4400 Roll Off Hook Truck; VIN 1HTS-DAA5VH435976
1999 Dunright Roll Off Tractor; VIN 1D9R0423XXL232505

2007 Sterling Twin Axle Dual Tire Roll Off Truck

MISC. TRUCKS

2004 Hino 145 20' Box Truck; VIN JHBNA6JK651510147
2002 Freightliner FL70 Box

Truck; VIN 1FVAB5AK62HJ78661

2005 Dodge 2500 Service Truck Black; VIN 3D7KS28C95G812127

2003 GMC Box Truck; VIN 1GDJ71393F506521

ROLLBACKS

2008 Dodge 5500 Rollback Wrecker; VIN 3D6WD76A086155463

2006 International 4300 Rollback; VIN 1HTMMAAM66H322491

2004 Chevy C4500 Auto Loader Wrecker Tow Truck; VIN 1GBE4E1133F52240

TRAILERS

2003 Cherokee Hydraulic Ramp Semi Trailer; VIN AZ140348

40' Gooseneck

2009 Rolls Rite 38' Gooseneck; VIN 1R9GD38209M356041

2016 36' Load Trailer Gooseneck Trailer; VIN 4ZEGC3625G1110347

2013 PJ 40' Gooseneck Trailer; VIN 4P5FD4020D30000906

Yellow Tilt Equipment Trailer

2019 Hartland Gravity Tilt Trailer; VIN 430FT2227KM062096

1997 Fountaine Flatbed Trailer with Log Bunks; VIN 13N145305V1574401

2004 Mac Log Trailer; VIN 5MAD5432640007838

53' Walking Floor Trailer

1988 Barrett Livestock Trailer; VIN 1B9L4820J1014179

1996 Fountaine 3-Side Trailer; VIN 13N24830XT1568466

Roll Off Trailer

1989 Witzco Beam Trailer; VIN 1W9A11F32KS061370

WEBCAST BIDDER INSTRUCTIONS

- **Bidders in the United States** will receive approval forms from our office upon registering for the auction on www.bidspotter.com, pending the Auctioneers review of the information provided you will be approved at the Auctioneers discretion.
- **Bidders outside of the United States** must post a deposit of approx. 25% of their planned spending budget or \$2,500.00 minimum with Cincinnati industrial auctioneers in order to be approved to bid. Those who do not post the deposit will not be approved. **period.**



1989 Witzco Beam Trailer



1988 Barrett Livestock Trailer



Peterbilt Roll Off Truck



2012 Ford F550 Steak Body Dump Bed



2008 Dodge 5500 Rollback Wrecker



1997 Ford L9000 5-Axle Dump Truck



Snorkel Model SR3284 Rough Terrain Scissor Lift



(6) Lift Trucks by Hyster, Yale, and Clark

WEBCAST AUCTION

Surplus Equipment to KR EQUIPMENT

5700 West 58th Street
Ashtabula, Ohio 44004
60 Miles East of Cleveland, Ohio

SALE DATE:
Wednesday, June 10th
STARTING: 10:00 AM

INSPECTION:
Monday, June 9th from 10:00 AM to 4:00 PM



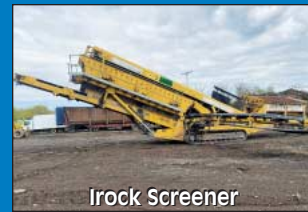
CINCINNATI
**INDUSTRIAL
AUCTIONEERS**

auctioneers | appraisers | since 1961

Contact Information
2020 Dunlap St.
Cincinnati, Ohio 45214
Phone 513-241-9701
Fax 513-241-6760
www.cia-auction.com



2008 Terex Rock Crusher



Rock Screener



Eagle Hammer Mill



Demolition Equipment

FIRST CLASS MAIL!

PRE-SORT
FIRST CLASS
U.S. POSTAGE
PAID
CINCINNATI, OHIO
PERMIT NO. 3593

Important Mail

TO BE DIRECTED TO THE ATTENTION
OF EXECUTIVE PERSONNEL

WEDNESDAY, JUNE 10TH

WEBCAST AUCTION

Surplus Equipment to KR EQUIPMENT

5700 West 58th Street
Ashtabula, Ohio 44004
60 Miles East of Cleveland, Ohio

IMPORTANT NOTICE:

Although information has been obtained from sources deemed reliable, the auctioneer makes no warranty or guarantee, expressed or implied, as to the accuracy of the information herein contained. It is for this reason that buyers should avail themselves of the opportunity to make inspection prior to the sale. This brochure is intended to provide general information of the equipment being offered and is subject to errors, omissions, additions or deletions. Please check with the Auctioneer's Office for a final listing. Items offered may or may not necessarily be sold as described and/or photographed in this brochure.

MAIL BIDS ACCEPTED WITH A 25% DEPOSIT

DIRECTIONS

Proceed East on I-90 to Exit 223 for OH-45. Turn North onto OH-45 and Take First Right onto Ashtabula-Austinburg Rd. Continue for 5.3 Miles to Right on to Bunker Hill. Take First Left onto West Ave and Proceed 0.3 Mile to Left Turn Onto 58th Street. Continue 0.3 Mile to Sale Site on Left at the End of 58th Street. Watch for Auction Parking and Auction Signs.

AUCTIONEERS

Cincinnati Industrial Auctioneers, Inc. –
License No. 63-1983-10439

Jeffrey L. Luggen – License No. 57-1983-33789

Joseph M. Luggen – License No. 2010-0000-19



TERMS OF SALE

All equipment described herein will be sold "as is", "where is" to the highest bidder or bidders for cash in accordance with our regular terms and conditions of sale. Unless other satisfactory arrangements are made, a **25% deposit** in cash, certified or cashier's check payable to Cincinnati Industrial Auctioneers, Inc., **is required on all purchases.** Firm and personal checks accepted only if accompanied by a letter from your bank guaranteeing your funds. All sales are subject to state and/or local taxes unless a signed exemption form is presented at the time of purchase. **All balances are due at the conclusion of the sale.** No merchandise may be removed while the sale is in progress. **All bidders must comply with our Standard Terms of Sale,** copies of which will be available at the sale site or can be obtained from our website.

18% ONLINE BUYER'S PREMIUM



Sale Under The Management Of

CINCINNATI INDUSTRIAL AUCTIONEERS

auctioneers | appraisers | since 1961 | cia-auction.com | info@cia-auction.com
2020 Dunlap St., Cincinnati, Ohio 45214 Phone 513-241-9701 Fax 513-241-6760